

# *Sel & Poivre*

TELEPHONE 212 517-5780  
FAX 212 517-4785  
CHRIS@SELETPOIVRENYC.COM

MONDAY—THURSDAY: NOON—10:30 PM  
FRIDAY—SATURDAY: NOON—11:00 PM  
SUNDAY: NOON—10:00 PM

SPECIAL HOURS FOR HOLIDAYS—PLEASE INQUIRE

WE ACCEPT  
AMERICAN EXPRESS  
VISA  
MASTERCARD  
DISCOVER  
TRAVELERS CHEQUES  
CASH

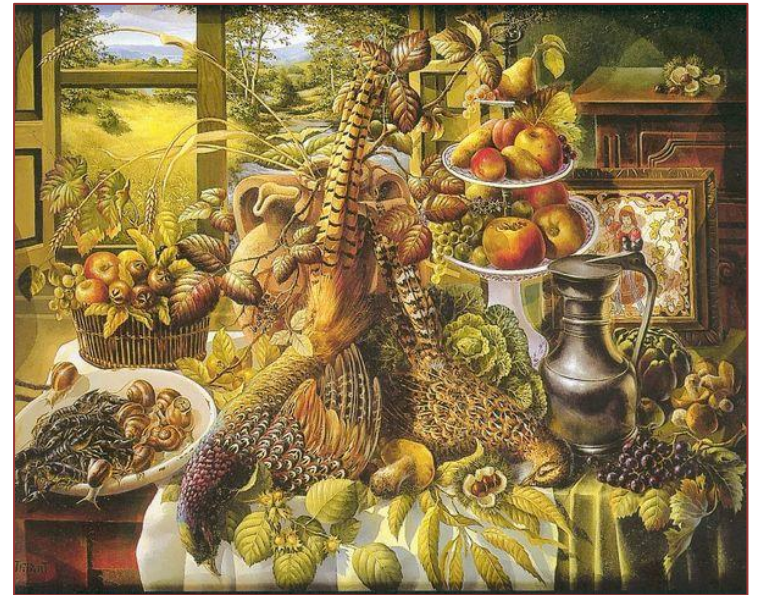
WE ARE CONVENIENTLY LOCATED NEAR THE  
F, Q, N, R, W, 4, 5 AND 6 TRAINS AT  
853 LEXINGTON AVENUE  
BETWEEN 64<sup>TH</sup> AND 65<sup>TH</sup> STREETS  
NEW YORK, NEW YORK 10065-6639

DELIVERY IS AVAILABLE WITHIN THE IMMEDIATE NEIGHBORHOOD

THE RESTAURANT IS AVAILABLE FOR PRIVATE PARTIES,  
SPECIAL WINE DINNERS, CATERING AND FOR FESTIVITIES  
SUCH AS SHOWERS, BIRTHDAYS, ANNIVERSARIES, ETC.

PLEASE CONTACT CHRISTIAN FOR MORE INFORMATION.

**SELETPOIVRENYC.COM**



## **SEL ET POIVRE**

**853 LEXINGTON AVENUE  
NEW YORK, NEW YORK 10065**

**A THANKSGIVING DAY DINNER  
IN THREE COURSES**

**SERVED FROM NOON TO NINE  
THURSDAY, NOVEMBER 23, 2017**

# À LA CARTE

## APPETIZERS

- FISH SOUP 11.95  
FRENCH ONION SOUP 11.95  
CRAB CAKES WITH MIXED GREENS 18.95  
MESCLUN SALAD WITH DIJON VINAIGRETTE 11.95  
ARUGULA, WATERCRESS AND ENDIVE SALAD  
WITH ROQUEFORT CHEESE 12.95  
TERRINE OF FOIE GRAS 19.95  
ASSORTED CHEESE PLATE 16.95  
CELERY ROOT WITH RED BEETS 13.95  
ESCARGOT WITH GARLIC BUTTER 13.95  
ARTICHOKE VINAIGRETTE 13.95

## ENTRÉES

- BOUILLABAISSA 32.95  
CHILEAN SEA BASS SERVED WITH VEGETABLE COUSCOUS  
AND TOMATO COMPOTE 37.95  
GRILLED SALMON WITH WHITE AND GREEN BEANS  
IN A SWEET WINE SAUCE 26.95  
DUCK À L'ORANGE 28.95  
ROAST CHICKEN WITH MASHED POTATOES 26.95  
BISTRO BURGER WITH FRENCH FRIES 18.95  
LOIN OF NEW ZEALAND RED STAG 38.95  
AGED NEW YORK SIRLOIN STEAK  
WITH ROQUEFORT OR SAUCE AU POIVRE 34.95  
FILET MIGNON IN A RED WINE AND SHALLOT SAUCE  
WITH ROASTED YUKON GOLD POTATOES 36.95  
SAUTÉED MIXED VEGETABLE PLATE 22.95

## DESSERTS

13.95

- TERRINE DE CHOCOLAT  
PROFITEROLES  
FRESH STRAWBERRIES SERVED WITH WHIPPED CREAM  
CRÈME BRÛLÉE  
TARTE AUX POMMES

# PRIX FIXE

38.00 PER PERSON

## APPETIZER

MIXED GREEN SALAD

OR

BUTTERNUT SQUASH SOUP

## ENTRÉE

OVEN-ROASTED TURKEY WITH CHESTNUT STUFFING,  
GIBLET GRAVY, BRUSSELS SPROUTS AND SWEET POTATOES

OR

GRILLED SALMON  
WITH GREEN AND WHITE BEANS  
IN A SWEET WINE SAUCE

## DESSERT

PUMPKIN PIE

OR CHOICE OF

CRÈME BRÛLÉE, APPLE TARTE  
OR CHOCOLATE MOUSSE  
5.00 SUPPLEMENT



CHESTNUT STUFFING, BRUSSELS SPROUTS,  
SWEET POTATOES OR A TURKEY LEG ARE AVAILABLE  
8.00 SUPPLEMENT